





VIEW OF HOTEL

TELEPHONE No. 55.

TELEGRAMS: GRAND HOTEL,
ST. ANNE'S-ON-THE-SEA.

Residential Hotel.

BEAUTIFULLY SITUATED ON THE SOUTH PROMENADE FACING THE SEA AND GARDENS, CLOSE TO THE NEW OPEN-AIR SWIMMING BATH; WITHIN EASY REACH OF THE FAMOUS LYTHAM AND ST. ANNE'S GOLF CLUB, FAIRHAVEN, ST. ANNE'S OLD LINKS, AND BLACKPOOL SOUTH SHORE. GARAGE ATTACHED TO THE HOTEL. PRIVATE SITTING-ROOMS, LOUNGE, BILLIARD-ROOM. EXCELLENT CUISINE. CHOICE SELECTION OF WINES.

MISS K. HOLLOWAY.



VIEW OF HALL.

Prof.

Tariff.

BOARDING TERMS, INCLUDING BEDROOM, BREAKFAST, LUNCHEON, AFTERNOON TEA (SERVED BETWEEN 4 AND 5 O'CLOCK), AND TABLE D'HÔTE DINNER, FROM *13/6* TO *15/6*.
PER DAY, ACCORDING TO THE POSITION OF BEDROOM.

SPECIAL WINTER TERMS ON APPLICATION.

APARTMENTS.

BEDROOM, SINGLE	PER DAY FROM	4	0
„ DOUBLE	„ „ „	7	0
SITTING-ROOM AND BEDROOM, COMMUNICATING,	PER DAY FROM	15	0
SITTING-ROOMS	„ „ „	6	0
BREAKFAST SERVED IN BEDROOM	EXTRA	0	6
FIRE IN SITTING OR BEDROOM	PER DAY	1	6
„ „ BEDROOM (EVENING)	„ „ „	1	0

Tariff.

TABLE D'HÔTE DINNER, SERVED AT SEPARATE TABLES	5	0
BREAKFAST, PLAIN	1	6
„ WITH FISH, CHOP, OR BACON AND EGGS	3	0
LUNCHEON	3	0
AFTERNOON TEA	1	0

AN EXTRA CHARGE IS MADE FOR MEALS SERVED IN PRIVATE ROOMS.

CHILDREN'S BOARD IN STEWARD'S ROOM, PER DAY ...	5	0
„ „ DINING-ROOM AT THE STEWARD'S ROOM HOURS, PER DAY	6	0
VISITOR'S SERVANT'S BOARD	5	0
HOT OR COLD BATHS	1	0
SPONGE OR HIP BATH IN BEDROOM	0	6

Lytham and St. Anne's Golf Club.



SECRETARY ... T. PYM WILLIAMSON.



THE LINKS ARE WITHIN FIVE MINUTES' WALK OF THE HOTEL,
AND ARRANGEMENTS CAN BE MADE FOR VISITORS

✧ DESIRING TO PLAY. ✧



✧ GOLF CLUB HOUSE. ✧

 Postal Information. 

OFFICE HOURS.

OCTOBER TO JUNE 8 A.M. TO 8 P.M.
JUNE TO SEPTEMBER 8 A.M. TO 9 P.M.
✧ SUNDAYS, 8 A.M. TO 10 A.M. FOR TELEGRAMS. ✧



→✧ LETTER MAILS. ✧←

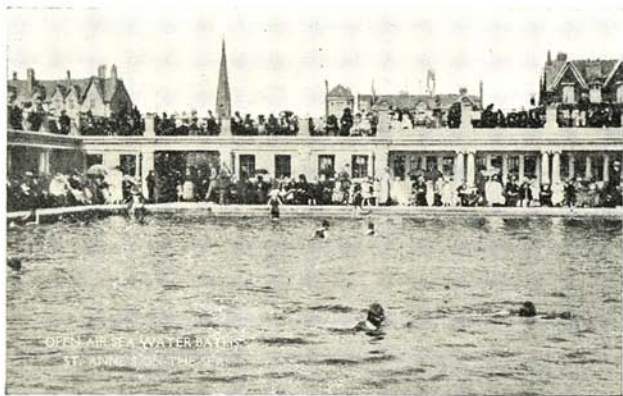
ALL PARTS 8.30 A.M.
LONDON, MANCHESTER, &C. 11.30 "
ALL PARTS (GENERAL NIGHT MAIL) 7.15 P.M.
✧ SUNDAYS (ALL PARTS) ... 5.45 P.M. ✧

"St. Anne's is a Beautiful Place."

—KING GEORGE V..

DURING HIS LANCASHIRE TOUR IN 1911.

St. Anne's-on-the-Sea is a rapidly rising seaside resort, famous for its bracing and invigorating climate. There is a splendid pier, an extensive promenade, and one of the finest sandy beaches in the kingdom, from which there is capital bathing. The average daily sunshine for the last 3 years was nearly 5 hours.



OPEN-AIR SWIMMING BATH, ALMOST OPPOSITE THE HOTEL.